



Heritage Trust Network Conference 2021



RECOVERY, SUSTAINABILITY, WELLBEING

Friday 19th November:
Drapers' Hall, Coventry

Saturday 20th November:
Tours & building visits, Coventry

www.heritagetrustnetwork.org.uk

Friday 19th November

DAY TWO: Drapers' Hall, Coventry



PROGRAMME

MORNING SESSION

- 09:00 Arrival refreshments
- 09:30 Welcome **LIZ BATES, HTN Chair**
- 09:45 Keynote **Finding innovative ways to sustain historic places: the work of a Heritage Development Trust**
CAROL PYRAH, Executive Director, Historic Coventry Trust
- 10:15 Workshops Choose one from the following:

Workshop A, Re-Plan

Lessons emerging from AHF's business support service.

MADELEINE BLYTH,
Investment Manager, AHF

Workshop B, Coventry's Great Places programme

Ideas and learning that can be applied to the current need for recovery.

CITY OF CULTURE TEAM,
Coventry UK City of Culture 2021

Workshop C, Troubleshoot with the Trustees

Our trustees have worked on projects from the tiny to the mammoth and have decades of experience between them. Come armed with questions!

NETWORK TRUSTEES,
Heritage Trust Network

- 11:20 Coffee break

- 11:40 Soap boxes **An opportunity to tell all attendees about your project or organisation – in just a few minutes!** Sign up details will be circulated in advance.

- 12:00 Workshops Choose one from the following:

Workshop A, From historic pub to community hub: lessons from the Old King's Head in Kirton

SESSION LEADER:

KELCEY WILSON-LEE, Head of Programmes and Impact, AHF

PANELLISTS:

KATE DICKSON, Director of Creative Heritage Consultants and
GREG PICKUP, Chief Executive of Heritage Lincolnshire

Workshop B, How the City of Culture programme is helping Coventry recover from lockdown

This will also include the Green Futures project.

CITY OF CULTURE TEAM,
Coventry UK City of Culture 2021

Workshop C, Retrofitting buildings sustainably, what to do and how to do it

Bring your questions and examples to share with an expert consultant.

JOHN EDWARDS,
Edwards Hart Consultants

- 13:00 Lunch break



To view the delegate list, visit:
www.heritagetrustnetwork.org.uk/conference-2021/delegates



#HTNConf21



AFTERNOON SESSION

- 14:00 Lottery prize draw!
- 14:10 Entertainment **Kindly sponsored by Donald Insall Associates**
- 14:25 Workshops Choose one from the following:

Workshop A, The power of networking; discussing your sustainability measures

**FERGUS ROLFE
& LAURA HARBARD,**
Fit for the Future

Workshop B, Combining heritage with wellbeing, health and social care

LLOYD STACEY,
Managing Director,
Riverside House, Stourbridge

Workshop C, Retrofitting buildings sustainably, what to do and how to do it

A second opportunity to bring your questions and examples to share with an expert consultant.

JOHN EDWARDS,
Edwards Hart Consultants

- 15:30 Coffee break
- 15:40 Action plans **Organisations share their plans for the year ahead**
Followed by a discussion with all attendees. Sign up will be circulated in advance.
- 16:20 Closing comments
- 16:30 Day Two ends
- 19:00 Conference Dinner at Metropolis

Throughout the day, we are offering free 30-minute, one-to-one sessions with experts from CFP Ltd and Buttress Architects. Sign up is in advance or via any cancellations on the day; speak to a member of the HTN team for more information.

ADRIAN SPRAY, Associate Director, CFP (www.cfpuk.co.uk)

Adrian has over 25 years' experience of green space and heritage management and development in the private, public and voluntary sectors. He specialises in involving people in the improvement of their local spaces and places, at both a local and strategic level and has developed creative and innovative projects in partnership with local communities, funding bodies and other agencies.

EMILY KEENAN, Consultant, CFP (www.cfpuk.co.uk)

An Oxford graduate with a masters degree in Environmental Management, Emily brings a wealth of experience consulting and engaging local communities, landowners and other stakeholders in heritage and green space projects. Emily specialises in consultation and engagement, evaluation and activity programming.

STEPHEN ANDERSON, Conservation Architect & Director, Buttress Architects (www.buttress.net)

Stephen, an architect since 2003, also holds a Post Graduate Diploma in Architectural Conservation and is a National Lottery Heritage Fund Mentor. He is a key member of the historic buildings team and is a passionate and enthusiastic lead architect, heading a number of significant projects within the practice that involve heritage and existing buildings.

JENNA JOHNSTON, Senior Heritage Consultant, Buttress Architects (www.buttress.net)

Jenna's work provides insight and advice on projects with heritage or conservation requirements, including new build in historic contexts. Her guidance enables clients to reach informed conservation and design solutions. Jenna undertakes historical research of varying types, which is analysed and employed in the preparation of heritage documents in accordance with Historic England and National Lottery Heritage Fund guidance.



#HTNConf21

DAY TWO: SPEAKER BIOGRAPHIES



CAROL PYRAH, *Executive Director, Historic Coventry Trust*

Carol Pyrah joined Historic Coventry Trust in May 2019. A medieval archaeologist by training, Carol has a First Class honours degree from the University of York. She went on to work for the Council for British Archaeology before joining English Heritage as an Inspector of Historic Buildings. As Regional Director in the North East, Carol was instrumental in the creation of a multi-organisation partnership to drive heritage-led regeneration in Berwick-upon-Tweed. Carol was part of the senior team designing and implementing a new model to split English Heritage into a self-sustaining charity and a new public body; Historic England. Following the launch of Historic England, Carol became part of the Executive Team shaping the strategy and future of the organisation.

www.historiccoventrytrust.org.uk



MADELEINE BLYTH, *Investment Manager, Architectural Heritage Fund*

Madeleine supports AHF's investment portfolio of charitable trusts, not-for-profit organisations, social enterprises, and community businesses, and their sustainable reuse of iconic buildings and spaces. Madeleine is responsible for RePlan, the AHF's post-investment strategic support platform, and the social and environmental impact of our investments. Madeleine is completing her MSc in Sustainable Urbanism at The Bartlett, having previously obtained an MA (Hons) in Anthropology and Sustainable Development from the University of Edinburgh. Starting her career in corporate social responsibility, Madeleine went on to become a Programme Manager at Techstars, running one of the world's leading early-stage business accelerator programmes, and helped to establish an early-stage venture capital fund.

www.ahfund.org.uk



CITY OF CULTURE TEAM, *Coventry UK City of Culture 2021*

Coventry's year as UK City of Culture began in May 2021 following delays due to Covid-19 restrictions. Despite this, the team have created an expansive programme of events that is bursting with creativity! "This is the city where movement began, from innovation in the transport industry to a history of activism. Our city has moved people for centuries. For a whole year, we will celebrate our city with events, music, dance, theatre, and large-scale spectacle. As well as these big celebrations, our city will show its unexpected side, with more intimate experiences and ways to get involved across every ward of the city. And it's not just Coventry. This celebration will see the entire region get involved and benefit from the opportunities that being City of Culture brings."

www.coventry2021.co.uk



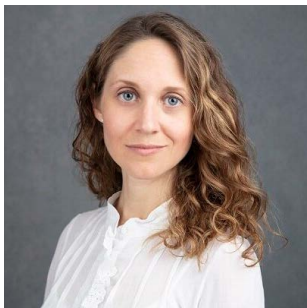
TRUSTEES, *Heritage Trust Network*

Facing a challenge in your heritage project? Or simply looking ahead? Do you want to know more about governance, procurement, or something else? Our trustees have seen it all. Working as fundraisers, project managers, Heritage Trust Directors and media and marketing experts, across the UK. Beyond our trustees, you never know what other support will be in the room on the day, so share your project and see who you might meet. Come along to this relaxed Q&A session to ask your questions and benefit from the Network!

www.heritagetrustnetwork.org.uk/about-us/trustees-and-staff



#HTNConf21



KELCEY WILSON-LEE, *Head of Programmes & Impact, Architectural Heritage Fund*

Dr Kelcey Wilson-Lee joined the AHF in September 2019 as its new Head of Programmes and Impact. This role leads on the oversight and management of the AHF's UK grant programmes, including the development of their impact reporting. Kelcey joined the AHF from the University of Cambridge, where she was a Senior Associate Director in the Development Team, with responsibility for regional philanthropy. Kelcey has an academic background in medieval history and built heritage, and has written a number of publications and books. Kelcey is joined in her workshop by panellists Kate Dickson, Director of Creative Heritage Consultants (www.creative-heritage.net) and Greg Pickup, Chief Executive of Heritage Lincolnshire (www.heritagelincs.org).

www.ahfund.org.uk



JOHN EDWARDS, *Director, Edwards Hart Consultants*

John Edwards is a specialist practitioner and part-time educator, which includes his role as Professor of Practice at the University of Wales, Trinity St David. With CITB's National Construction College, he developed the only short course in retrofitting older buildings that achieves a qualification. He is involved in the development of standards and guidance, which includes leading in the development of BS7913 and co-authoring BSI standards for retrofit being a member of the steering groups producing PAS2030, PAS2035 and PAS2038. Prior to joining Edwards Hart in 2014, John was Assistant Director of Cadw. John delivers training in Energy Efficiency Measures for Older and Traditional Buildings, in one of the few courses that provide a qualification in this area.

www.edwardshart.co.uk



FERGUS ROLFE & LAURA HARBARD, *Fit for the Future*

Fit for the Future is an environmental sustainability network with over 100 charities, heritage organisations, culture venues, public sector bodies in our membership. We facilitate knowledge-sharing and collaboration across organisations and sectors so that they can achieve the rapid and far-reaching changes needed to decarbonise, adapt to climate change and drive positive environmental impacts. Fergus Rolfe (Manager) joined in 2018 and is an experienced project manager in the sustainability sector. He previously delivered projects that included life-cycle analysis, sustainable material implementation, building performance monitoring, and the delivery of carbon reduction measures. Laura Harbard (Project Officer) has over ten years' experience working in the charity sector, retail, and hospitality.

www.fff.org.uk



LLOYD STACEY, *Managing Director, Riverside House*

Riverside House is a beautiful and ecologically diverse Grade II listed site in the historic heart of Stourbridge. This derelict, mid-19th century iron master's house and grounds has begun its transformation into a pioneering health and wellbeing centre. The programme focuses on the arts, traditional crafts, ecology, heritage, food, and land-based activities and reaches a wide range of beneficiaries. The site will also provide a café and craft shop for the local community. Lloyd has 18 years' experience working with young people with complex special educational needs and developmental difficulties. This has been both as a qualified teacher and latterly in a managerial position. His area of expertise is in communicating and working with other people through project participation.

www.riverside-house.org.uk



#HTNConf21

Saturday 20th November

DAY THREE: Tours & building visits, Coventry

Morning tours

Tours will last approximately two hours. Choose one from the following:

City of Culture Tour

See how the City of Culture has transformed Coventry city centre, taking a look at the major landmarks and cultural venues, places that have featured prominently in the programme. The tour will include the Show Windows Exhibition, In Paint We Trust – Public Art Commissions and exciting redevelopment works that are taking place now across the city.

CITY OF CULTURE TEAM

Start point: 10:00 outside Drapers' Hall.

City Centre Heritage Regeneration

Tour Historic Coventry Trust's city centre projects including the High Street Heritage Action Zone National Demonstrator Project at The Burges and Hales Street. Tour buildings and projects that Historic Coventry Trust have just restored, and get a sneak peek at work-in-progress.

GRAHAM TAIT & CAROL PYRAH, Historic Coventry Trust

Start point: 10:00 outside the Transport Museum.

Spon End, Weaver's House

Visit this terrace of medieval cottages, restored and managed by a community-based trust and experience the life of a 15th century weaver.

TINA WOODROFFE, Chair, Spon End Building Preservation Trust

Start point: 09:45 outside the Telegraph Hotel. Tea and coffee will be available from 10:00, the tour will start at 10:30.

12:00

Lunch

Starley Suite, Coventry Transport Museum

Including an opportunity to look around the museum.

Afternoon tours

Tours will last approximately two hours. Choose one from the following:

Charterhouse and London Road Cemetery

A unique, behind the scenes peek at the Charterhouse, originally a Carthusian monastery, now being restored by Historic Coventry Trust, and set in Coventry's new Heritage Park. Then move on to the Joseph Paxton designed London Road Cemetery and hear about the Trust's plans for its two historic chapels.

HANNAH JONES & CAROL PYRAH, Historic Coventry Trust

Start point: 13:00 outside the Transport Museum.

Twentieth Century Coventry

Explore Coventry's unique modernist and twentieth-century architecture. Hear the story of post-war regeneration and the UK's first pedestrianised city centre.

CATHERINE CROFT, Director, Twentieth Century Society

Start point: 13:30 outside the Transport Museum.

Spon End, Weaver's House

A second opportunity to visit this terrace of medieval cottages, restored and managed by a community-based trust and experience the life of a 15th century weaver.

TINA WOODROFFE, Chair, Spon End Building Preservation Trust

Start point: 13:15 outside the Transport Museum. Tea and coffee will be available from 13:30, the tour will start at 14:00.

15:30

Conference ends



To view the delegate list, visit:

www.heritagetrustnetwork.org.uk/conference-2021/delegates



#HTNConf21

DAY THREE: SPEAKER BIOGRAPHIES



GRAHAM TAIT, *Assistant Director, Historic Coventry Trust*

Graham is an archaeologist with a background in academic heritage, conservation and archaeology. He has worked in local government and private practice ranging from archaeological work for Wessex Archaeology and community projects in Gloucestershire to running the Historic Environment Record at Devon County Council. He joined the Trust as Assistant Director in March 2019 from Coventry City Council, where he was Conservation & Archaeology Officer. Graham recently completed an MA in Conservation of the Historic Environment at Birmingham City University.

www.historiccoventrytrust.org.uk



© Clare Chamberlain

TINA WOODROFFE, *Chair, Spon End Building Preservation Trust*

"I volunteer at The Weaver's House and it is a pleasure to spend time in this gem of Coventry's rich history. In a small space architecture and social history are revealed and can be contrasted with today's busy world. There is something for everyone to enjoy and reflect upon, and on a warm day, the garden is a magical place."

Spon Street is one of the most historic areas in Coventry, where a terrace of six cottages built in 1455 has been brought back to life by Spon End Building Preservation Trust. One of the cottages has been restored to show how John Croke, a Coventry narrow-loom weaver, and his family would have lived and worked around the year 1540.

www.theweavershouse.org



HANNAH JONES, *Charterhouse General Manager, Historic Coventry Trust*

Hannah graduated with a BA(Hons) in Dance and Drama from the University of Surrey. Her career began in facilities management and security at various satellite sites at the BBC, eventually working at Television Centre in West London for 14 years. In 2002 she became Visitor Services Manager at Castle Howard near York, creating memorable visitor experiences which involved everything from food festivals to Father Christmas and archives to adventure playgrounds. Since 2016, Hannah worked as Site Manager at Shakespeare's Birthplace in Stratford-upon-Avon, a site that welcomed near 400,000 visitors a year.

www.historiccoventrytrust.org.uk



CATHERINE CROFT, *Director, Twentieth Century Society*

Catherine has been Director of the C20 Society for over ten years and is Editor of the C20 magazine. Catherine read Architecture at Cambridge University, and did an MA in Material Culture & Architectural History in the USA, where she held a fellowship at the Winterthur Museum in Delaware. She has lectured to post graduate building conservation students throughout the UK, and is an alumna of the Architectural Association course. Prior to C20 Society she worked for English Heritage as a buildings inspector in London and the Midlands. Author of a book on concrete architecture, Catherine writes on contemporary as well as historic buildings, lectures internationally and teaches a course on concrete for conservation professionals at West Dean College.

www.c20society.org.uk



#HTNConf21

Heritage Trust Network would like to thank the following organisations for helping to make this event possible:



Contact us

Heritage Trust Network
0121 233 9283
admin@heritagetrustnetwork.org.uk
heritagetrustnetwork.org.uk

